



# World Archery Field Championships 2012

## 14-19 August 2012



20<sup>th</sup> February 2012



**Dear President, archers and officials,**

As Co-Chairmans of the Organising Committee and on behalf of the **French Archery Association and of the City of Val d'Isère**, we are pleased to invite you to the **World Archery Field Championships 2012 in Val d'Isère**, who hosted the downhill event of the 1992 Olympic Games on the Belvedere track and the World Ski Championships in 2009.

The Competition will take place 14-19 August 2012 and will be shot according to the FITA Field Archery rules and regulations. The event is open to competitors in the three FITA field disciplines, Recurve, Compound and Bare bow.

18 years after the World Field Championships in Vertus, France is proud to host the best field-archers of the world. The organizing committee and the volunteers will do their best to offer the best conditions to competitors and officials. The championship will be organized on two magnificent venues: the qualification and elimination rounds will take place in La Daille and the finals at the feet of the famous Belvedere track.

You will find enclosed all the documents presenting the registration, accommodation and transportation conditions.

**Please notice the deadlines for entries:**

- Starting date for online registration with FORS is
- End of Preliminary registration:
- End of Final registration:

**20 February 2012**

**16 May 2012**

**24 July 2012**

**Fax** the enclosed documents within the registration deadlines to +33-1-48-94-23-48

**Or**

**Email** the enclosed documents to [valdisere2012@ffta.fr](mailto:valdisere2012@ffta.fr), Patricia Renaud is your registration contact.

**Reminder you will still need to complete the registration process through the World Archery Online Registration System (FORS), as described on page 3.**

Your family and guests are welcome to attend and will need to make their own travel accommodations. Should they need additional information on the event Val d'Isère please visit the following website [www.valsport.org](http://www.valsport.org) or [www.valdisere.com](http://www.valdisere.com)

We look forward to seeing you in august.

Sincerely yours,

Philippe BOUCLET  
FFTA President

Marc BAUER  
Mayor of Val d'Isère

Co-Chairmans of the Organizing Committee

## PRELIMINARY PROGRAM

This preliminary programme could slightly change according to number of participants and TV requirements. All changes will be published and distributed in good time.

Sunday 14 August	<b>Official Arrival Day</b> Airport and Train station transportation provided on request of the delegations Practice Field Open Local Transportation to practice field available
Monday 13 August	<b>Official Arrival Day</b> Airport and Train station transportation provided on request of the delegations Practice Field Open Local Transportation to practice field available
Tuesday 14 August Day 1	<b>Official Practice</b> Team Captain Meeting Opening Ceremony
Wednesday 15 August Day 2	<b>1<sup>st</sup> Qualification Round</b> – 24 Targets Unmarked distances
Thursday 16 August Day 3	<b>2<sup>nd</sup> Qualification Round</b> – 24 Targets Marked distances
Friday 17 August Day 4	<b>Individual Eliminations</b> Morning : Individual Elimination Round 1 12 targets marked Lunch Afternoon : Individual Elimination Round 2 8 targets marked Individual Semi-finals – 4 Targets
Saturday 18 August Day 5	<b>Team Events</b> Teams Quarterfinals – 8 targets Teams Semifinals – 4 targets Teams Medal Matches – 4 targets (all targets are marked distances) Medal Ceremony 17:00
Sunday 19 August Day 6	<b>Individual Finals</b> Individual Medal Matches – 4 targets (Widescreen and TV broadcast) Medal Ceremony, Closing Ceremony Closing Party
Monday 20 August	<b>Departure of the Delegations</b>



# World Archery Field Championships 2012

## 14-19 August 2012



### PRELIMINARY & FINAL REGISTRATION

No entry forms will be available for registering to this event.

All registration process has to be done using the WAF Online Registration System (FORS): [www.archery.org/admin](http://www.archery.org/admin)

A maximum number of **3 athletes per country** (host country included) are allowed to be registered into each category of the event.

Preliminary entries have to be done using FORS, V2:

In order to be able to use FORS, please enter this internet address in your web browser [www.archery.org/admin](http://www.archery.org/admin) and use your Username and Password that FITA had assigned to each Member Association. After entering the FORS, please go to "Online Registration" and register your archers for this event.

A "FORS User Manual" can be downloaded in PDF format (English) from the same website.

For any questions regarding the FORS, please contact [jcholgado@archery.org](mailto:jcholgado@archery.org).

- |  |                         |
|--|-------------------------|
| • Starting date for online registration with FORS is | <b>20 February 2012</b> |
| • End of Preliminary registration:                   | <b>16 May 2012</b>      |
| • End of Final registration:                         | <b>24 July 2012</b>     |

Please pay attention to the stated deadlines. After the deadlines have passed, MAs will not be able to enter or update data in FORS anymore, and the system will be blocked. In this case, if MAs would like to change or proceed with the Final Registration process after the deadline, it is required to contact FITA office.

(Mr Juan Carlos HOLGADO, FITA Event Director: [jcholgado@archery.org](mailto:jcholgado@archery.org)).

Final entries processed after the deadline will have a penalty fee of 50 Euros per archer to be paid to the OC at the moment of arriving at the event.

Final registration that differ by more than 4 archers from the preliminary registration or have been submitted after the preliminary deadline will have a penalty fee of 150 Euros to be paid to the OC at the moment of arriving at the event.

We also remind you that any entry later than 3 days before the team captain's meeting for a FITA World Cup or World Championships will be refused if no preliminary entry and/or final entry were made before. This decision cannot be appealed by the teams and is fully in compliance with the current FITA rules and article 3.7.1.2. Entries after the deadlines are subject to penalties as clearly written in the rule book and the invitation documents of World Cups and World Championships.

A Member Association that has made final entries in FORS and does not participate will be invoiced for the number of entries entered in the system, unless the MA has informed FITA and the OC in writing at least one week prior to the event that they are unable to attend.

As a final note, only member Associations in good standing will be eligible to compete. This also means that any penalty fee for 2012 will have to be paid prior to participation.



## World Archery Field Championships 2012 14-19 August 2012



### Entry Fees

- Athletes: 150,00 Euros
- Officials: 100,00 Euros

The entry fee includes local transportation from official hotels to the competition venue, practice field. Hotels located outside of Val d'Isère do not have local transportation provided. Arrival and departure airport or railway transportation is not included.

### Transportation (Arrival and departure days)

Lyon Airport – (220 km – 2h30 to 3h00 driving) – 100,00€/person  
Geneva Airport – (177 km -2h30 to 3h00 driving ) – 100,00€/person  
Chambery TGV Railway station – (135 km – 1h30 to 2h00 driving) – 70,00€/pers.

### Closing Party

A barbecue and disco party will be organized on Sunday evening at the Club des Sports.  
Fee: 20,00 €/per person

### Cancellation Policy -

Cancellations must be provided in writing

- Cancellation received before final entry: full refund of the deposit payment
- Cancellation received after final entry: no refund
- Name change (the same category and division) will be accepted up to 72 hours before the event without any additional charge. OC should be informed about changes in the travel program before 24 July 2012. If your arrival is later than your original schedule, the room charges are starting from the original date indicated by the Member Associations in their accommodation forms.

## ACCOMODATION

The hotels in Val d'Isère propose variable rates in a same hotel, corresponding to the size and to the confort of the rooms. We invite you to choose a hotel category and to indicate the type of accommodation you need. Valhotel or Valloc, if you want to be accommodated in apartments, the central reservation of the station, will prepare a proposal for each delegation.

In case the hotel doesn't have a restaurant, the organizing committee, will provide tickets with a value of 20,00€, that will enable the delegations to have a complete dinner in a selection of restaurants of the station.

In case participants do not book accommodation through Valhotel or Vallocation, they will have to pay double entry fee. LOC is not responsible for the local transportation for participants and officials accommodated in non-official hotels or apartments.

### Presentation of the Hotels

All hotels are located close to the venues, less than 15mn walk for most of them. In addition to the buses in the morning and after the competitions, regular shuttles will enable the officials and participants move from the hotels and the venues during the day.

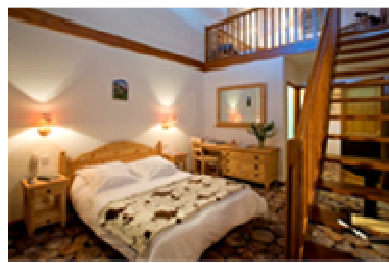
### \*\*\* Hotels

#### Hotel ALTITUDE

At the foot of the legendary Belvedere ski run, close to the World Championships Finals venue, this impressive charming chalet invites you to enjoy the good life during the whole year. Wood décor atmosphere in the lounges, Swimming pool, well-being and fitness center with sauna, steam room, gym.

41 rooms, meeting rooms.

Restaurant – Possible half board



## Hotel SAINT HUBERT

The Auberge St Hubert is located in the very heart of the ski resort of Val d'Isère. The Auberge St Hubert will help you to enjoy your stay with its ambiance bar. The 28 rooms are comfortable and spacious with for most of them a balcony with a view on the village or the mountain. Wifi at the desk. The Auberge St Hubert is 150 metres from the Belvedere Olympic downhill "Face". B&B only.



## Hotel ORMELUNE

Located in the centre of Val d'Isère, Ormelune welcomes you in its totally renewed modern hotel.

46 rooms. Breakfast only, no half board.



## Hotel LA BECCA

Delight in the cosy comfort of the chalet La Becca located 1km from the center of Val d'Isère. 11 rooms decorated in authentic mountain style. No half board.





## Hotel LES SORBIERS

Located in the center of the village, close to the Finals venue, Chalet-Hotel Les Sorbiers offers great calm and modern comfort in Alpin atmosphere.

29 Rooms en-suite with Jacuzzi

Telephone in every room -TV with International programs in every room

Free WIFI available in the hotel



## \*\* Hotels

### Hotel BELLEVUE

Ideally located in the heart of the village of Val d'Isère, the hotel is managed by the family MATTIS.

The hotel has 28 rooms in the hotel annex and the cottage, all situated nearly

The 28 rooms - non smoking - have shower or bath.

The family rooms can accommodate up to 2 adults and 3 children. They consist of two bedrooms, bathroom, TV



## Hotel Les Seracs

Overhanging the Chevril lake, the hotel has a splendid view on the Dome de la Sache and Mont Pourri. 1 mile from the skilifts of Val d'Isère and 5' walk from the National Park of Vanoise.

Bar - Salon - Billard - Wifi in the lobby and restaurant

Covered garage, with extra cost.

1 room suitable for disabled person.

Possible Half board. Every evening, le Chef offers a new daily menu for your pleasure.



## Hotel Les Cretes Blanches

The Hotel Les Cretes Blanches is superbly located in the Centre of Vald'Isère, only minute walk to the ski slopes, restaurants and shops.

The atmosphere is friendly and relaxed with a spacious but cosy lounge area, with large windows and french doors which open on to a spectacular balcony overlooking the world famous "Bellevarde Olympique" ski run.

No restaurant in the hotel.





## **ACCOMODATION BOOKING FORM**

**MEMBER ASSOCIATION/COUNTRY:**

### **HOTELS**

**The prices include bed and breakfast**

	Room type	Number of rooms	Number of persons	Arrival date	Departure date	Number of nights
<b>Hôtel **</b> from 39 € to 60 € /person in twin bed room 63 € to 70€ in single room	Single					
	Twin					
	Double					
<b>Hôtel ***</b> from 52 € to 75 € /person in twin bed room 75 to 120€ in single room	Single					
	Twin					
	Double					

Some hotels offer the possibility to be accommodated in triple or quad rooms.

Indicate if you are interested:

☐ yes      Number of triple :

Number of quad:

☐ no

**Order of preference for Hotels** (indicate the name of the Hotels)

- 1
- 2
- 3

### **Payment Policy for Hotel Accomodation**

The Organising Committee's banking details for Hotel Accomodations are as follows:

Valhotel - Championnats du Monde de Tir en Campagne 2012

Banque de Savoie

Bank Adresse : Imm. LE METROPOLE – 73150 Val d'Isere - FRANCE

IBAN : FR 76 1054 8000 1300 0441 3420 744

SWIFT CODE : BSAV FR 2C

## **ACCOMODATION BOOKING FORM**

### **MEMBER ASSOCIATION:**

### **APARTMENTS**

The price for accommodation in apartments is depending on the comfort and the number of beds needed.

	<b>Apartment type</b>	<b>Rate apartment</b>	<b>Number of persons</b>	<b>Number of beds needed</b>	<b>Number of nights</b>	<b>Arrival date</b>	<b>Departure date</b>
Apartment for a week from 13 to 20 august 2012	Small Studio 2 persons	From 250 €					
	Large Studio 4 persons	From 328 €					
	Apartment 2/3 rooms 6 persons	From 502 €					

☐ Please check here if you require facilities for the disabled.

### **Cancellation Policy Accommodation**

Please refer to Valhotel and Vallocation cancellation conditions

### **Accommodation : Organising Committee Contact Details**

#### **Hotels**

Contact : Elodie TRANCHAND - [valhotel@valdisere.com](mailto:valhotel@valdisere.com)  
 Tel : +33 4 79 06 18 90 - Fax : + 33 4 79 06 11 88

#### **Apartments**

Contact : Florence FINDELING - [appart@valdisere.com](mailto:appart@valdisere.com)  
 Tél : (33) 04 79 06 06 60 - Fax : (33) 04 79 41 95

## TRANSPORTATION FORM

<b>Member Association/COUNTRY :</b>
<b>Number of Persons:</b>

Please note that OC will ensure transportations from and to Lyon Saint Exupery and Geneva Airport and Chambéry Train station.

For Airport transportation's cost is 100 Euros per person.

For Train transportation's cost is 70 Euros per person

### \*Arrival Information

Arrival	
Airport – Lyon or Geneva Chambéry Train station	
Destination Flight/Train No.	
Date	
Time	

### \*Departure Information

Departure	
Airport – Lyon or Geneva Chambéry Train station	
Destination Flight N°/Train No.	
Date	
Time	

Date:

CONTACT (name and e-mail):

Signature of President/ Secretary General

**Please return this document before 24 July 2012 by email [valdisere@ffta.fr](mailto:valdisere@ffta.fr) – or fax (+33 1 48 94 23 48)**

## **BOOKING FORM**

**Registration - Transportation – Field lunch boxes - Meals and closing party**

### **MEMBER ASSOCIATION:**

	Unit Price	Quantity	Total
Registration Athletes	150,00 €		
Registration Officials	100,00 €		
Transportation (Airport)	100,00 €		
Transportation (Train station Chambéry)	70,00 €		
Field lunch box	8,00 €		
Lunch ticket in selected restaurant	20,00 €		
Closing Party	20,00 €		
<b>Grand Total</b>			

## **Payment Policy for Registration – Transportation – Closing Party - Meals**

**The Organising Committee's banking details are as follows:**

**ASS CLUB DES SPORTS - WORLD ARCHERY FIELD CHAMPIONSHIPS**

**Bank Name:** Banque Populaire des Alpes

**Bank Address:** BPS VAL D'ISERE - Immeuble Le Dôme - 73150 VAL D'ISERE

**IBAN:** FR76 1680 7000 0782 2826 0321 715

**SWIFT (BIC):** CCBPFRPPROF

Date:

CONTACT (name and e-mail):

Signature of President/ Secretary General

**Please return this document before 24 July 2012 by email [valdisere@ffa.fr](mailto:valdisere@ffa.fr) or fax (+33 1 48 94 23 48)**



# World Archery Field Championships 2012

## 14-19 August 2012



### Organising Committee Contact Details

#### General Informations and Transportation

##### FFTA

Contact: Patricia RENAUD - [valdisere@ffta.fr](mailto:valdisere@ffta.fr)

Fax: +33 1 48 94 23 48

#### Accommodation

##### Hotels

Contact: Elodie TRANCHAND - [valhotel@valdisere.com](mailto:valhotel@valdisere.com)

Tel : +33 4 79 06 18 90 - Fax : + 33 4 79 06 11 88

##### Apartments

Contact: Florence FINDELING - [appart@valdisere.com](mailto:appart@valdisere.com)

Tél : (33) 04 79 06 06 60 - Fax : (33) 04 79 41 95

**Official Web site of the Championship:** [www.valsport.org](http://www.valsport.org)